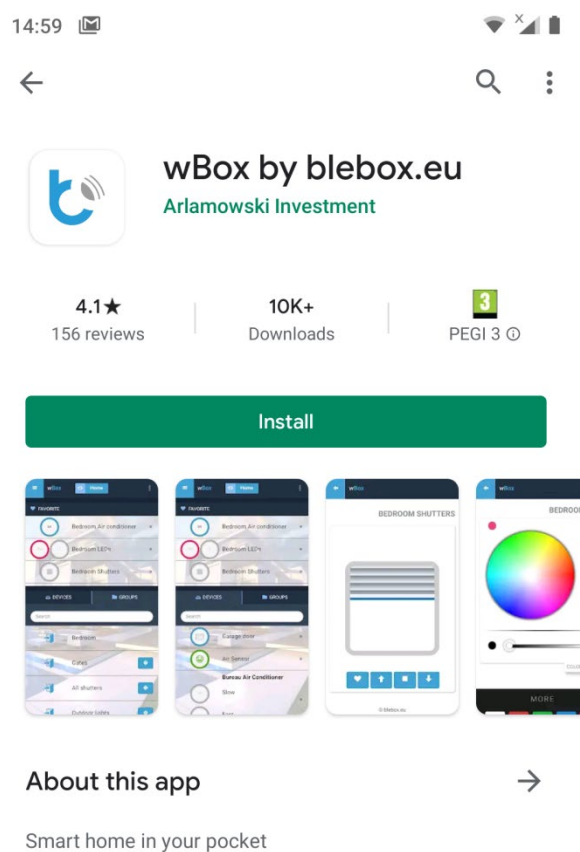


K-SMRT

Quick installation guide

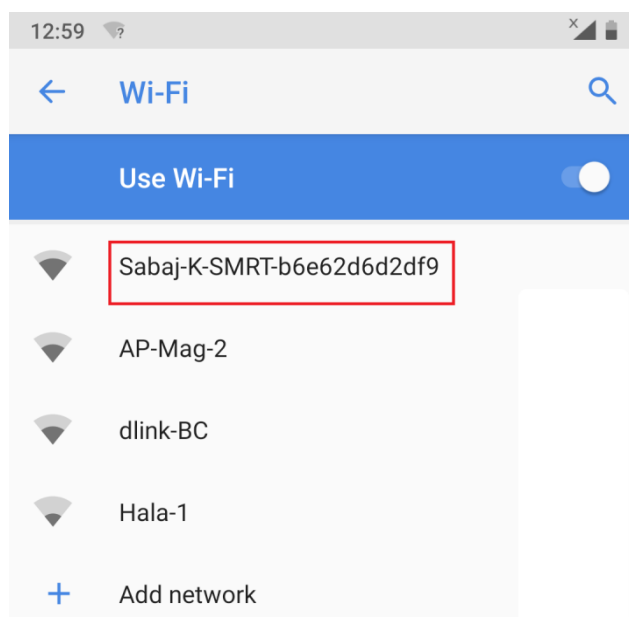
1. Download wBox app from Google play or App store



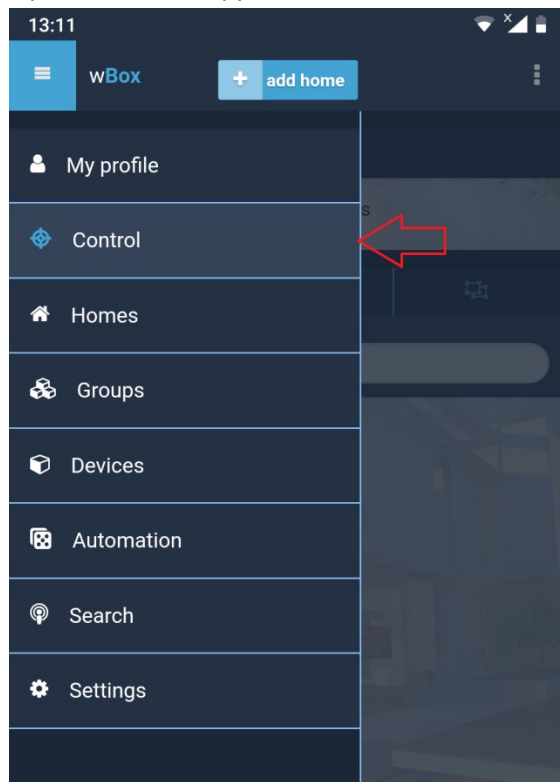
2. Plug in the K-SMRT to your active RJ-45 Socket



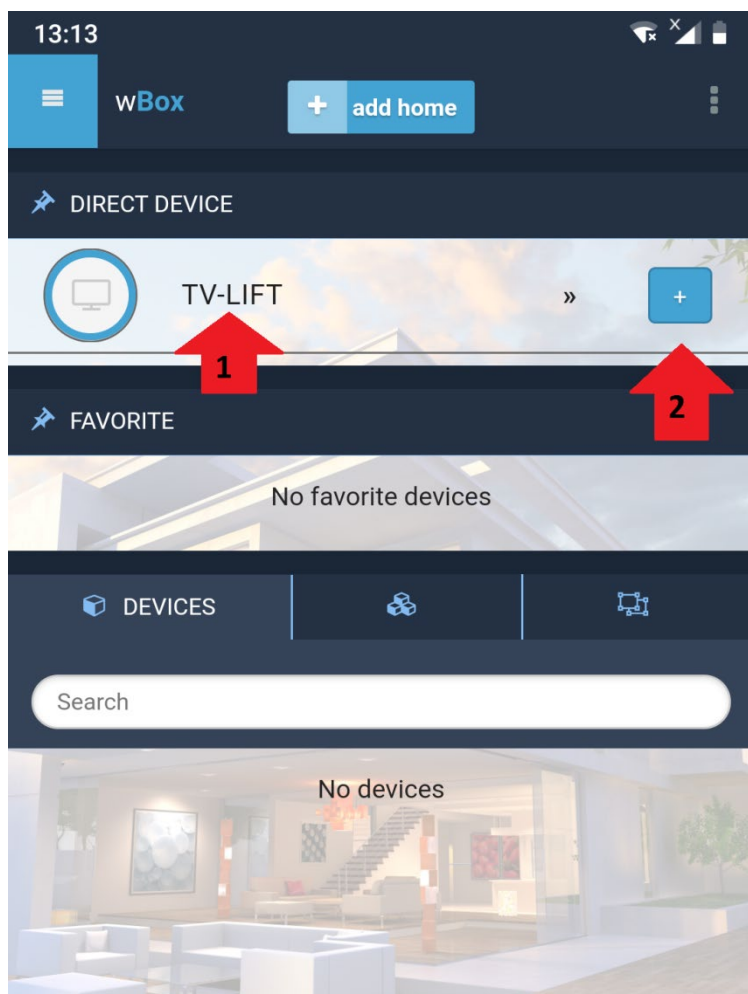
3. Connect to the controllers Wi-Fi network . It will most likely be named Sabaj-K-SMRT-xxxxx , where xxxx are random alphanumeric signs.



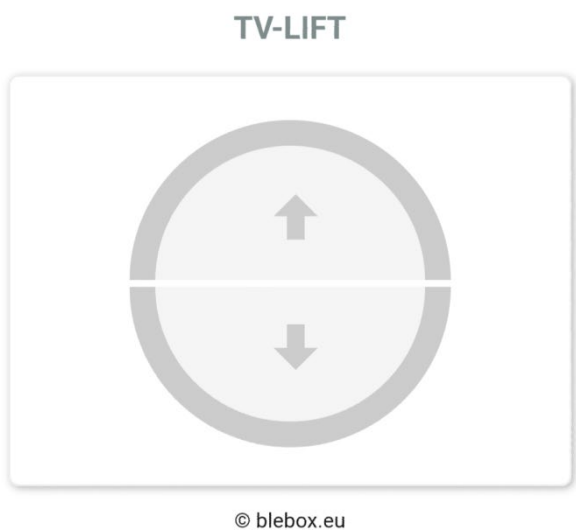
4. Some phones may report , that the internet service is unavailable – it is normal.
5. Open the Wbox App and choose “Control” to find your device .



6. You can add the device immediately by pressing the “+” symbol (2) . Than go to your devices main screen (1)

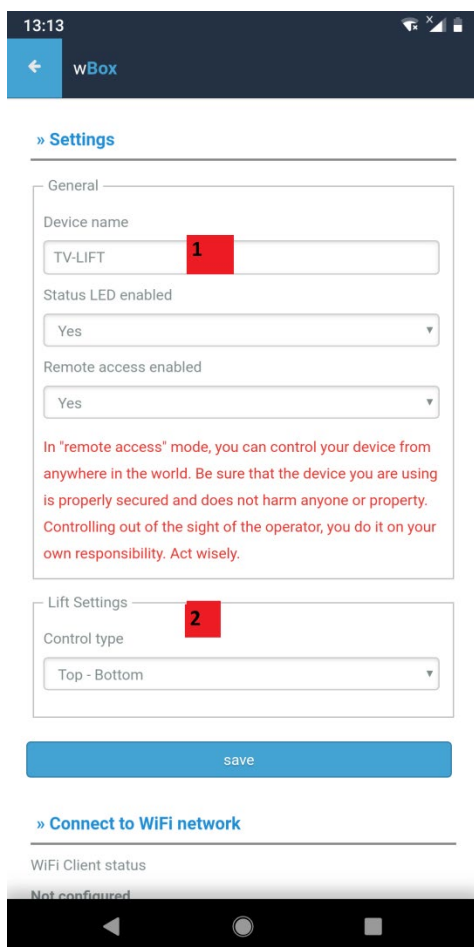


7. You can easily operate your lift now , but it is wise to go to the options screen for additional setup.
Tap the gear icon to get to settings screen



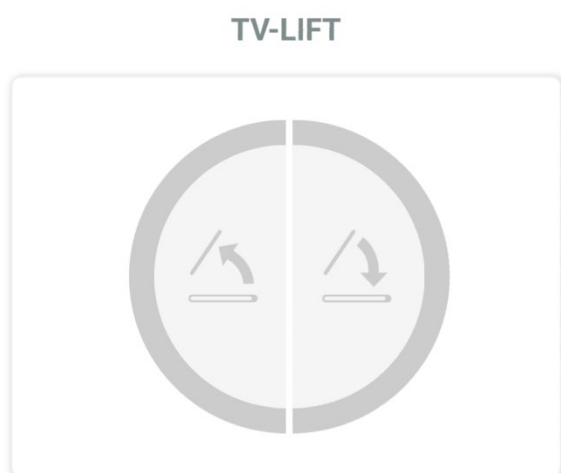
The most important options are :

1) changing the devices name

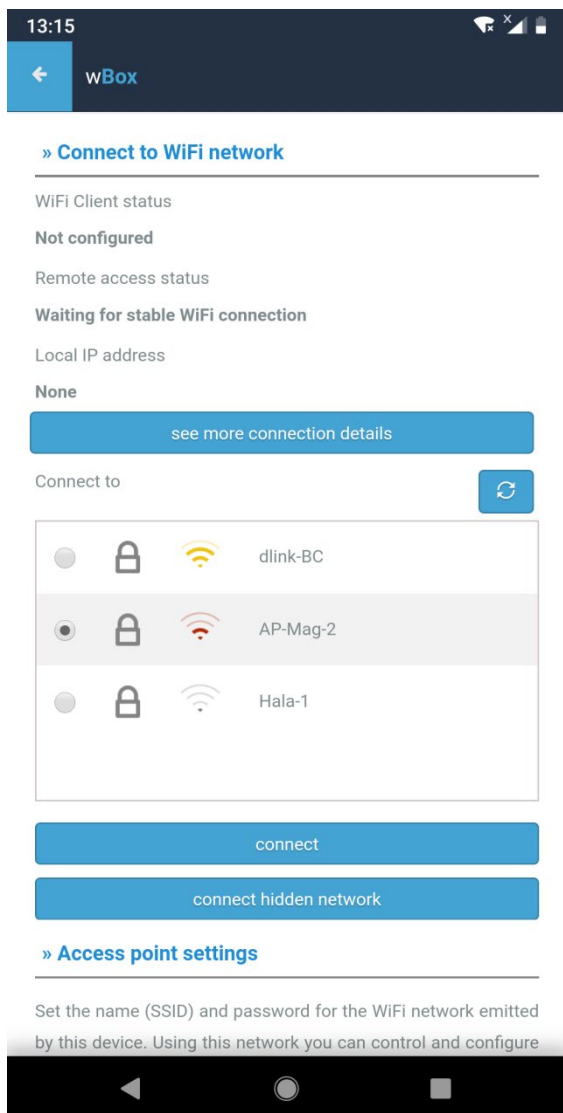


2) **Changing the control type** – if you operate a lift , you will probably prefer to leave it on top-bottom option , which results as Up and DOWN arrows on the devices main screen.

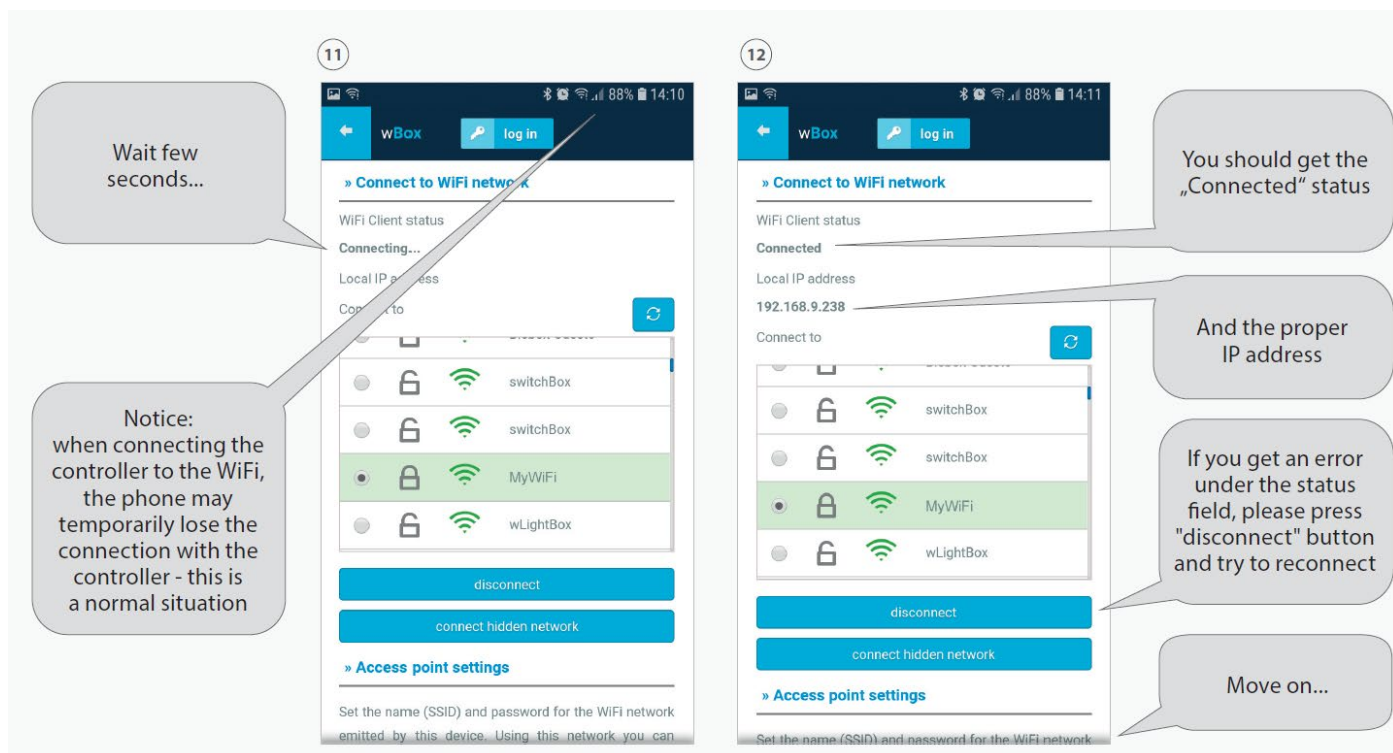
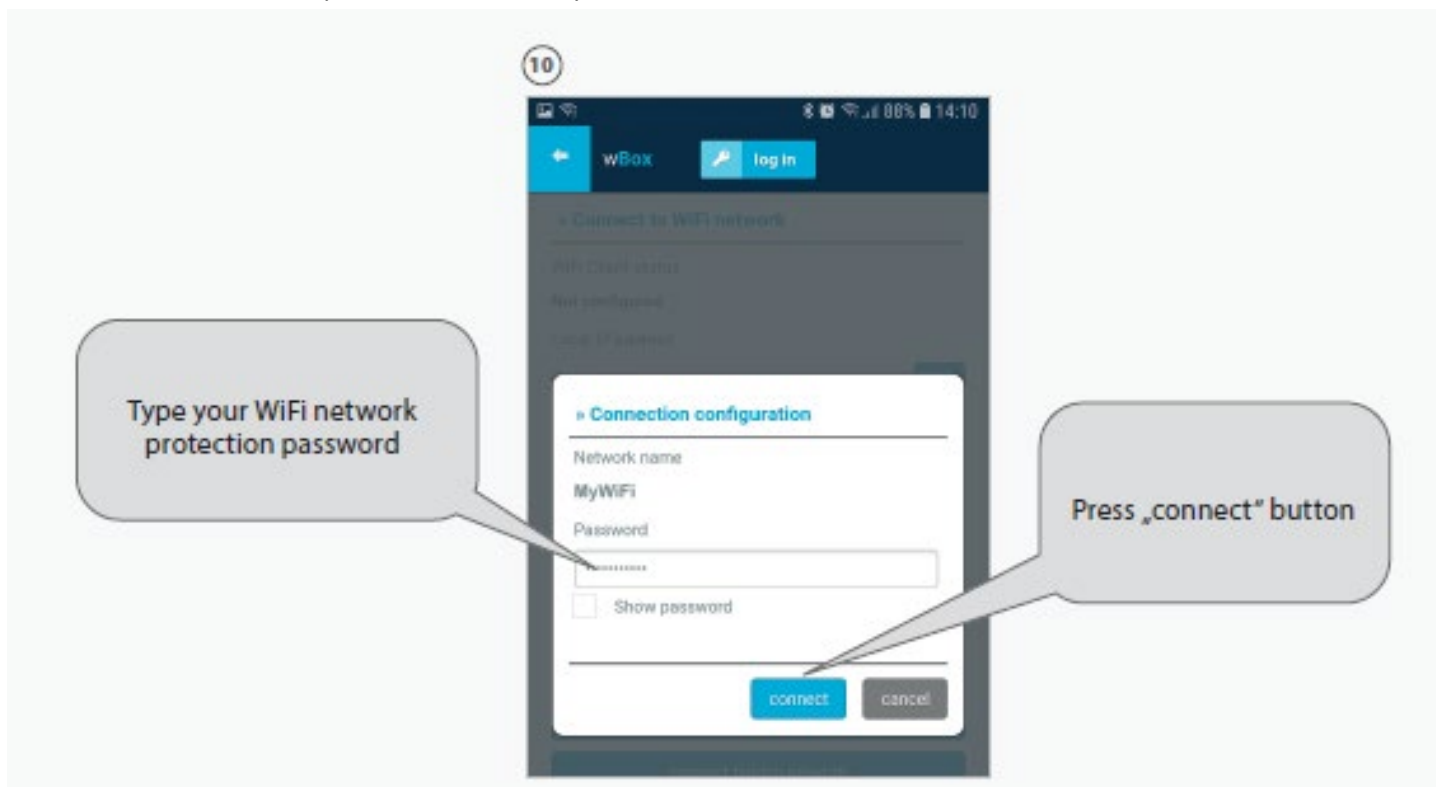
If you are using a rotating or swinging tv lift , like the SWING MOUNT – you will probably prefer to change to OPEN-CLOSE (see picture below) control type. This affects only the visual side of your Wbox app.

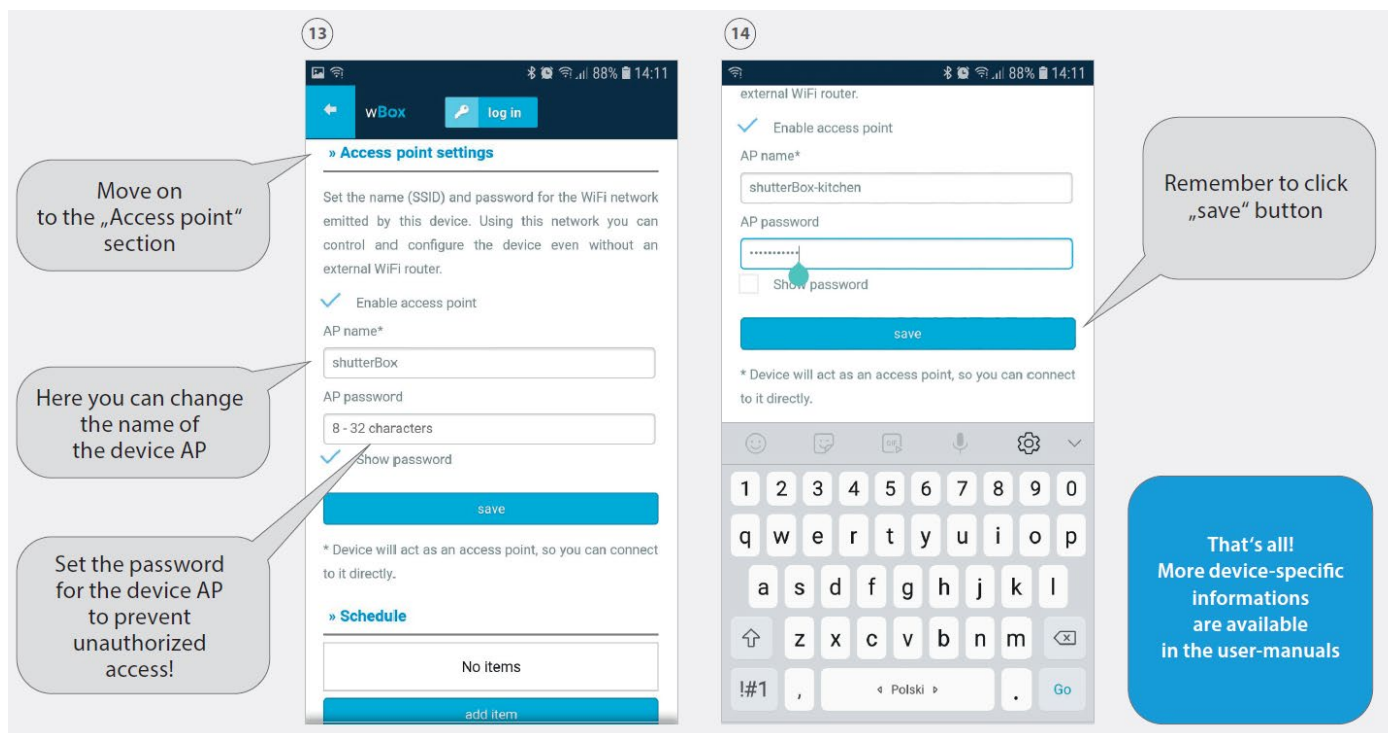


8. **Options mode** – connect to WiFi . To connect your device to an existing WiFi network , simply choose the Wi-Fi service and provide password to it. From now on , your K-SMRT device will be visible on the Wbox app , when you connect your phone to your WiFi network.



9. From there the setup is the same as every other Wbox devices ;





13

» Access point settings

Set the name (SSID) and password for the WiFi network emitted by this device. Using this network you can control and configure the device even without an external WiFi router.

Enable access point

AP name*

shutterBox

AP password

8 - 32 characters

Show password

save

* Device will act as an access point, so you can connect to it directly.

» Schedule

No items

add item

14

external WiFi router.

Enable access point

AP name*

shutterBox-kitchen

AP password

.....

Show password

save

* Device will act as an access point, so you can connect to it directly.

Remember to click „save“ button

That's all! More device-specific informations are available in the user-manuals

For more detailed manuals regarding the Blebox controller – please visit

https://blebox.eu/manuals/?lan_g=en