

# Floorlift Required informations

\* - necessary data

## TV Screen Data:

\* TV Make/Model:.....

(link or datasheet is acceptable).

Screen size:.....[inch]

Width:.....[cm]

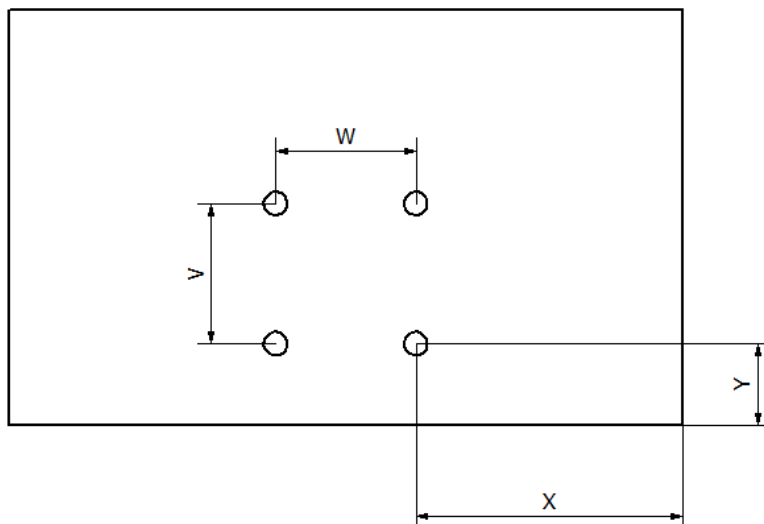
Height:.....[cm]

VESA placement on the back

X:..... [cm]

Y:..... [cm]

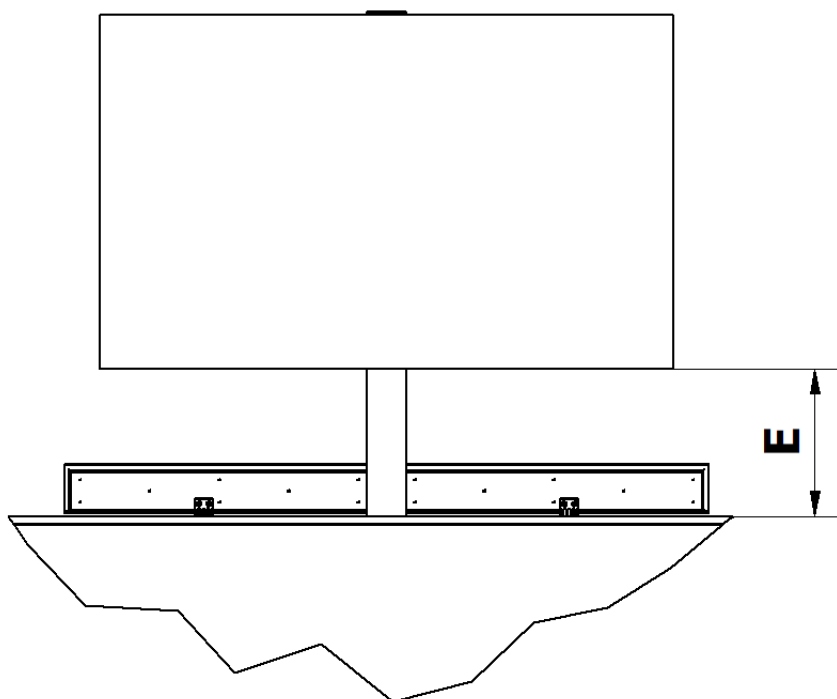
VESA (W x V):.....[cm]



**\*Choose the version (tick checkbox) and provide lifting height E**

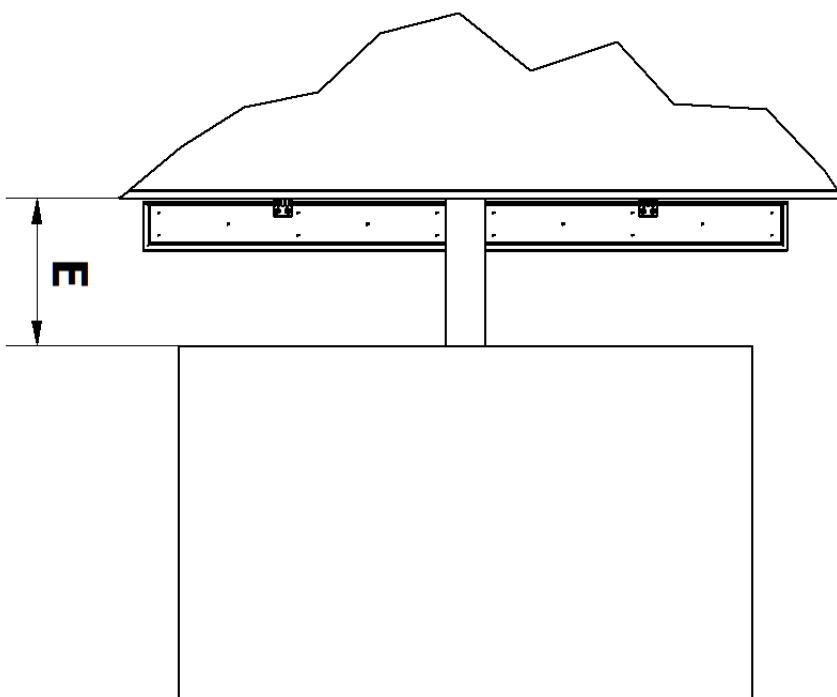
DOWN-UP  
(floor based)  
[E]:..... cm ☐

**Next step:  
SECTION A**



UP-DOWN  
(ceiling based)  
[E]:..... cm ☐

**Next step:  
SECTION B**



# SECTION A

## Apartment data:

\*Floor hole size width [A]:..... [cm]

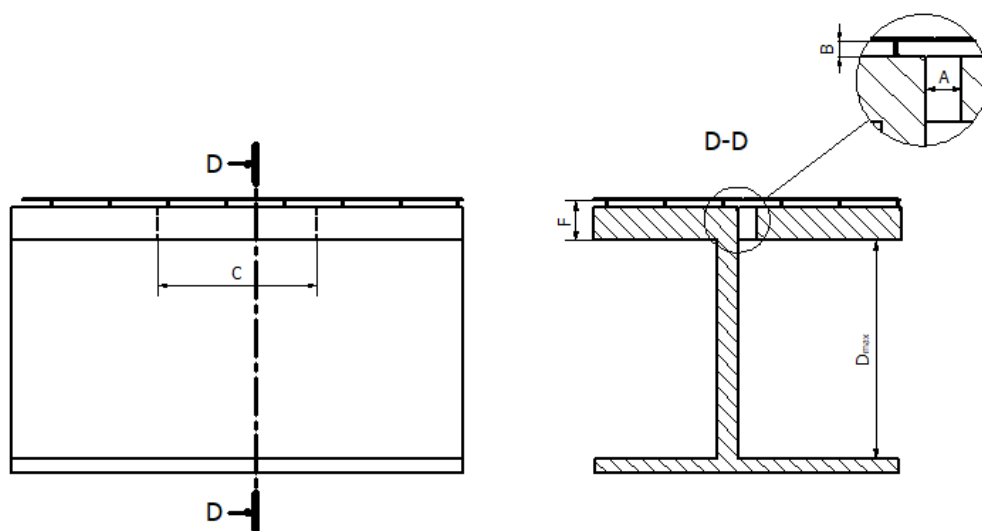
\*Floor hole size length [C]:..... [cm]

\*Height beneath the ceiling [ $D_{max}$ ]:..... [cm]

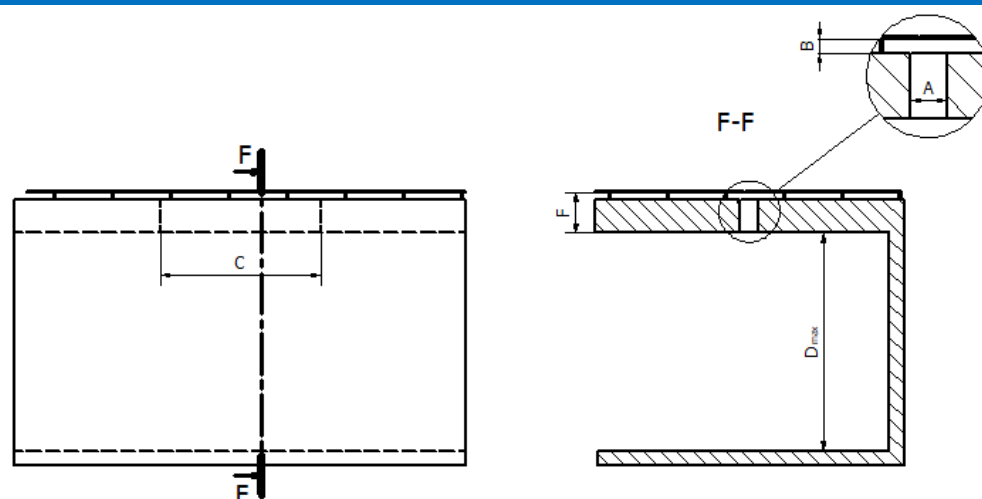
\*Space beneath the ground and floor cover (parquet) [B]:..... [cm] - (Only for raised floor system)

\*Floor thickness [F] : ..... [cm]

## -Choose mounting type (tick correct checkbox):



Close to the wall



Far from the wall



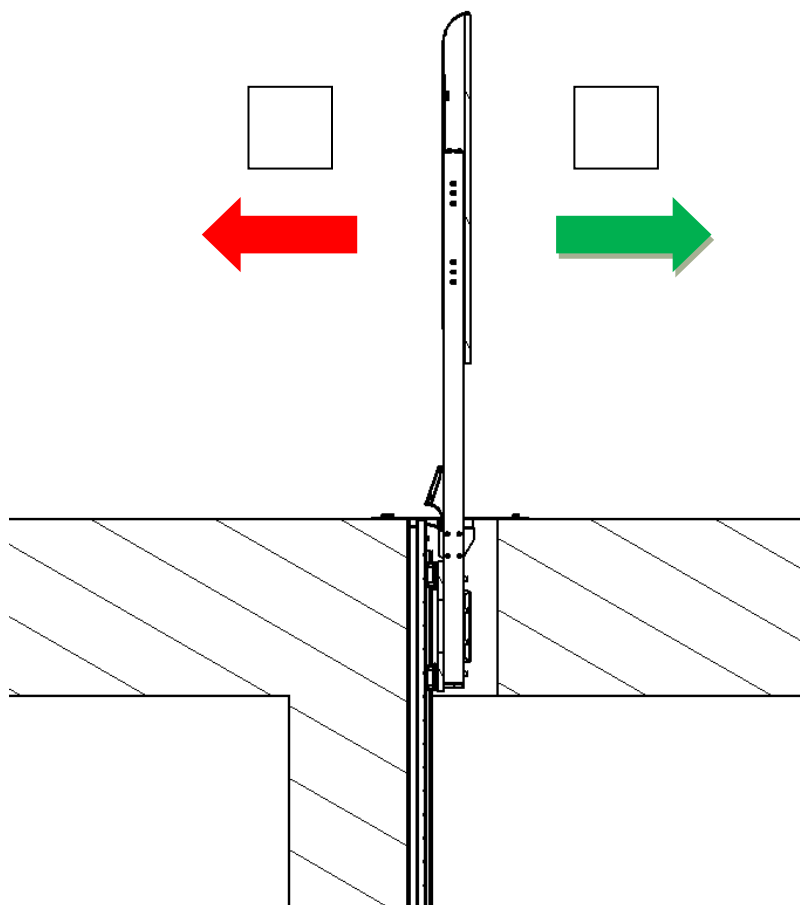
*Please take into consideration, that the unit requires at least 40 cm extra space for the mechanism*

*Please draw any additional limits or necessary informations in the frame visible above.*

*Please draw, which direction should the TV be facing, and which way should it drive (UP-DOWN / DOWN-UP)*

## SECTION A

-Choose the Screen direction (only if you choose close to the wall type mount).



## SECTION B

### Apartment data:

\*Ceiling hole size width [A]:..... [cm]

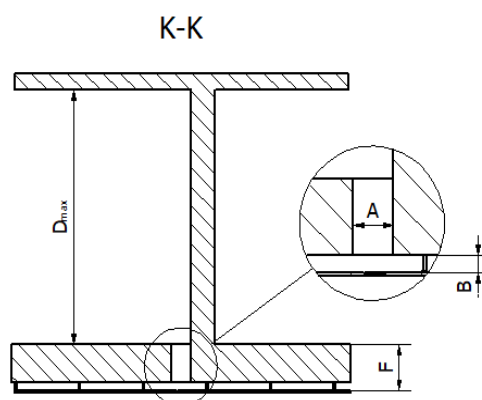
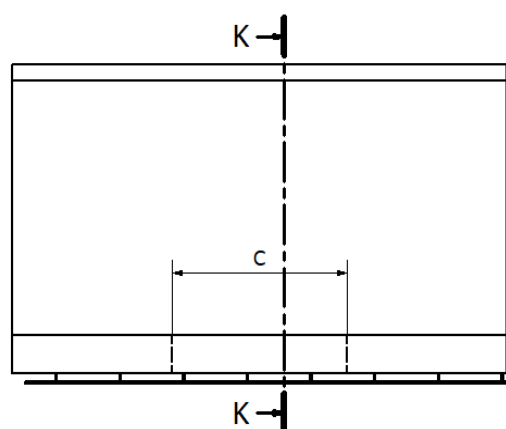
\*Ceiling hole size length [C]:..... [cm]

\*Height beneath the ceiling [ $D_{max}$ ]:..... [cm]

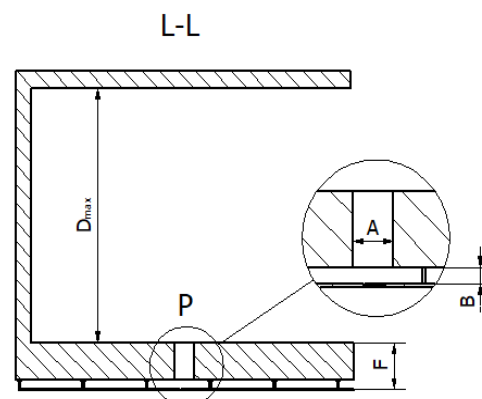
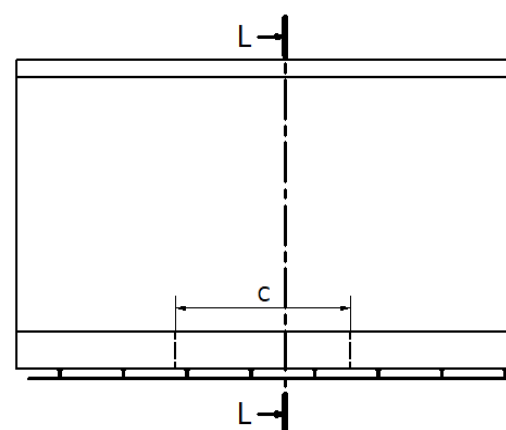
\*Space beneath basic ceiling and suspended ceiling [B]:..... [cm] - (write "0" for no suspended ceiling )

\*Ceiling thickness [F] : ..... [cm]

### -Choose mounting type (tick correct checkbox):



Close to the wall



Far from the wall



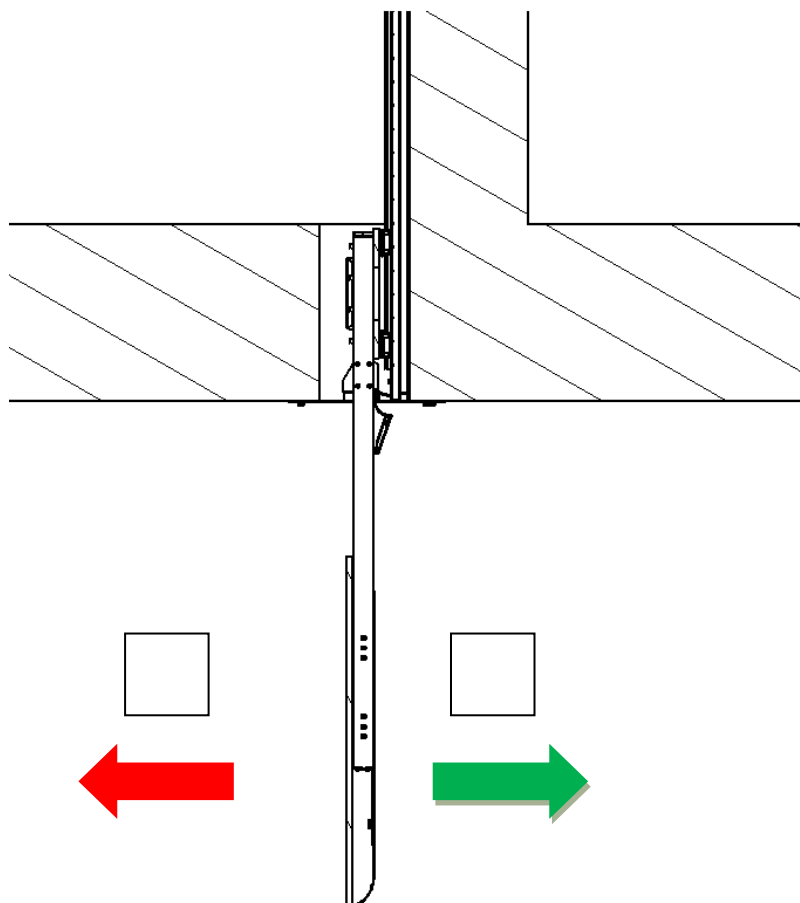
*Please take into consideration, that the unit requires at least 40 cm extra space for the mechanism*

*Please draw any additional limits or necessary informations in the frame visible above.*




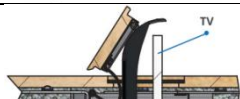



*Please draw, which direction should the TV be facing, and which way should it drive (UP-DOWN / DOWN-UP)*

## SECTION B





-Choose the Screen direction (only if you choose close to the wall type mount).



## Standard set contains:

✓ Lifting mechanism	
✓ Control box with <a href="#">Active RJ-45 socket</a>	
✓ Plastic cable carrier (not visible when TV is up)	
✓ Lid + Lid lip + hinges (to mount final flooring finish on top)	
✓ TV Bracket	
✓ <a href="#">RF Remote</a>	
✓ Foam gasket for lid	

## Additional options (tick checkbox for offer):

<input type="checkbox"/> <b>Frame + cover for mechanism</b> - RAL 9005 Black color. 3-ply Aluminium-Polyethylene composite board for covers and DC01 welded & painted RAL 9005 profile for frame	
<input type="checkbox"/> <b>K-PLC</b> - dry contact switch with 5-meter cable for controlling the lift with external devices such as Lutron, KNX or any other smarthome devices	
<input type="checkbox"/> <b>K-BTN</b> – 2-way button with 5-meter cable for operating the unit	
<input type="checkbox"/> <b>K-SMRT</b> - WiFi Adapter for controlling the unit with dedicated iOS/Android App. Please mind that the control box must be within your home WiFi network	
<input type="checkbox"/> Automatic Lid (not yet available)	
<input type="checkbox"/> <b>Power Guard (recommended)</b> - additional 3-meter power cable with power monitoring option to cut out power when the TV is hidden. TV is plugged into the power cable in control box without the need for extra cables inside	